

PRINCESS 62



PRINCESS 62



The all-new Princess 62 encapsulates our meticulous design ethos and all the benefits of the latest infusion technology, enabling the inclusion of features normally possible only on much larger craft. Her flybridge inspires relaxation with a large dining area, a sunpad aft and a unique circular forward seating area that can be converted into an additional sunpad. Boasting a walkthrough foredeck entertaining space and a hydraulic bathing platform as standard she is an ingenious and compelling addition to our Flybridge range.

Her cavernous main deck saloon connects to the world outside through full length side windows, while her sociable galley is positioned aft and opens to the cockpit. The helm position is located to starboard with additional forward facing guest seating opposite. Below deck six guests enjoy three beautifully appointed en suite cabins all bathed in natural light from elegant hull glazing, with the option of a further twin cabin aft for occasional guests or crew.

Le tout nouveau Princess 62 concentre notre philosophie du design toute en attention du détail et tous les apports de la technologie de l'infusion la plus récente pour permettre d'intégrer des atouts normalement réservés aux yachts de bien plus grande taille. Son flybridge donne le goût de la détente avec un vaste coin repas, un bain de soleil à l'arrière et un salon circulaire unique à l'avant qui peut se transformer en bain de soleil supplémentaire. Avec en série un espace de réception sur le pont avant en accès direct et une plateforme hydraulique de baignade, il constitue un complément astucieux et convaincant à notre gamme Flybridge.

Son volumineux salon de pont principal s'ouvre sur le monde extérieur par des fenêtres latérales pleine hauteur tandis que sa cuisine conviviale, située à l'arrière, donne sur le cockpit. Le poste de barre est à tribord, à côté de sièges invités regardant vers l'avant, sur l'autre bord. Au pont inférieur, six personnes profitent de trois belles cabines, chacune avec sa salle de bain, toutes noyées de la lumière naturelle des élégantes ouvertures vitrées dans la coque, avec la possibilité d'ajouter à l'arrière une cabine à deux couchages pour un invité surprise ou pour l'équipage.



يجسد يخت برينسيس 62 الجديد أدق مبادئ التصميم وكافة الفوائد التي تقدمها التكنولوجيا الحديثة، ما يتيح إدماج سمات ومزايا لا تتوفر في المعتاد إلا في السفن الضخمة. يتسم سطح اليخت بالرحابة والاسترخاء حيث يضم طاولة كبيرة لتناول الطعام وشيزلونج للتسفع بالمؤخرة ومنطقة جلوس أمامية مستديرة يمكن تحويلها إلى شيزلونج إضافي للتسفع. ويفخر اليخت بمنطقة خارجية مفتوحة تصلح لاستضافة الضيوف ومنصة استحمام هيدروليكية مميزة قياسية، ما يجعل من هذا اليخت إضافة مبتكرة ومذهلة لمجموعة Flybridge. تحظى منطقة الصالون المنخفضة الأنيقة بنوافذ ضخمة تطل منها على العالم الخارجي، أما المطبخ المجهز فيقع بالمؤخرة ويفتح على المنصة الخلفية المفتوحة. أما مكان القيادة فيقع على اليمين وملحقة به منطقة جلوس إضافية لمواجهة الأمام للضيوف. ويتسع الطابق الأسفل لإقامة ستة ضيوف في ثلاث كبائن أنيقة مزودة كل منها بحمام مستقل، ويغمرها جميعاً الضوء الطبيعي عبر النوافذ الزجاجية الأنيقة، مع إمكانية إضافة كابينة أخرى مزدوجة بالمؤخرة لاستيعاب مزيد من الضيوف أو لطاقم الملاحة.

La nuova Princess 62 racchiude la nostra meticolosa filosofia di progettazione e tutti i vantaggi della più recente tecnologia di infusione, che permette l'inserimento di funzioni normalmente possibili solo su scafi molto più grandi. Il suo ponte ispira relax con una grande sala da pranzo, un'area sole a poppa e un esclusivo salotto circolare a prua che può essere convertito in un'area sole aggiuntiva. Con i suoi spazi per l'intrattenimento a prua e una piattaforma bagno idraulica di serie, si tratta di un'aggiunta ingegnosa e convincente alla nostra gamma Flybridge.

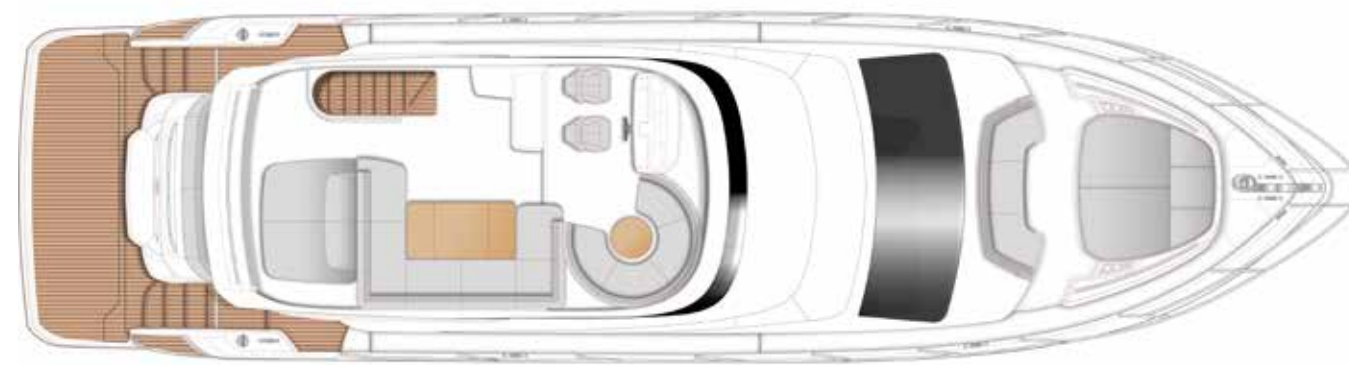
Il suo salone principale cavernoso si collega al mondo esterno attraverso le finestre laterali, mentre la cambusa è posizionata a poppa e si apre alla cabina di guida. La posizione del timone si trova a dritta con l'aggiunta di salotti per gli ospiti di fronte. Sottocoperta sei ospiti godono di tre cabine ben arredate con bagno, tutte illuminate dalla luce naturale proveniente da eleganti vetri dello scafo, e con la possibilità di una ulteriore cabina doppia a poppa per gli ospiti o l'eventuale equipaggio.

Новейшая модель Princess 62 воплощает в себе скрупулёзность дизайна и все преимущества передовых технологий. Благодаря этому нам удалось реализовать в ней те функции, которыми обычно отличаются яхты значительно больших размеров. На её флайбридже можно отдыхать в обеденном пространстве или загорать в кормовой части, а уникальная носовая зона отдыха округлой формы легко превращается в дополнительную площадку для принятия солнечных ванн. Широкая открытая палуба бака и гидравлическая купальная платформа в стандартной комплектации делают эту яхту неординарной и интригующей новинкой в модельном ряду Flybridge. По всей длине просторного салона на главной палубе установлены боковые окна. Вместительный камбуз находится в кормовой части яхты и имеет выход в кокпит. Пост управления расположен по правому борту. Для гостей здесь имеется кресло, развернутое к носовой части яхты. Три великолепно обставленные каюты с собственными ванными комнатами на нижней палубе рассчитаны на шесть гостей и освещаются через изящные иллюминаторы естественным светом. В кормовой части можно оборудовать дополнительную каюту для гостей или команды.

PRINCESS 62

PRINCESS 62

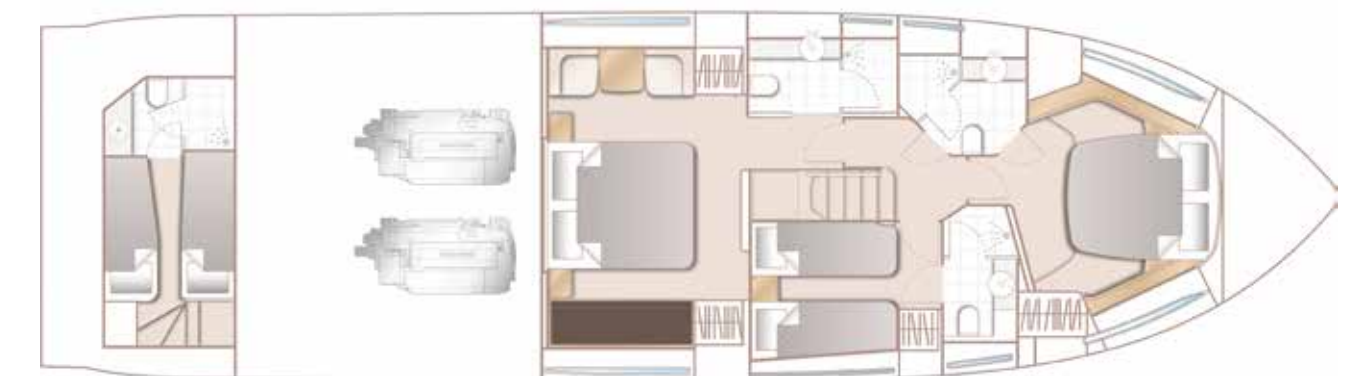
ENGLISH



FLYBRIDGE



MAIN DECK



LOWER DECK

PRINCIPAL DIMENSIONS

Length overall (incl. pulpit)	63ft 5in (19.34m)
Length overall (excl. pulpit)	62ft 7in (19.09m)
Beam	16ft 6in (5.03m)
Draft	4ft 11in (1.49m)
Displacement approx.	29,300kg (64,595lbs)*
Fuel capacity	748 gal/898 US gal/3,400l
Water capacity (incl. calorifier)	174 gal/209 US gal/793l

DECK FITTINGS

- Teak-laid transom platform, cockpit deck, flybridge stairway and stairs to side decks
- Self-stowing 32kg/70lbs Delta anchor with 40m of chain
- Reversible electric anchor winch with foredeck, helm position and flybridge controls
- Foredeck seating and sunbathing area
- Stainless steel cleats, fairleads and handrails
- Dual station remote control searchlight
- Freshwater deck/anchor wash
- Storage lockers for rope, fenders and foredeck sunbed cushions
- LED deck level lighting

COCKPIT

- U-shaped seating with teak folding table
- Locker housing 240v shore support inlet and cable storage
- Lockable gas strut assisted hatches to engine room, lazarette and optional crew cabin
- Twin transom gates leading to bathing platform with electro-hydraulic raise/lower mechanism, foldaway swimming ladder, hot and cold shower, storage and deck light
- Transom seat
- Cockpit cover

FLYBRIDGE

- Dual station instrumentation, controls and alarm system including VHF/RT, speed and distance log, echo sounder with alarm and autopilot
- U-shaped seating area with folding teak table
- Forward seating area with teak table
- Sunpad aft with storage below
- Radio/MP3 with waterproof speakers
- Wetbar including sink with electric barbecue and top loading coolbox

LOWER HELM POSITION

- Twin helm seats with fore and aft adjustment for helmsman
- Electric opening windows at helm position and port side
- L-shaped seating area opposite helm position
- Full engine instrumentation including fuel gauges, exhaust temperature, fuel contamination alarms, rudder position indicator
- Navigation system including colour radar, GPS and chartplotter, VHF/RT, speed and distance log, echo sounder with alarm, autopilot and high speed magnetic compass
- Controls for bow thruster, windscreen wipers, bilge pump and trim tabs (with indicator)
- 24v and 220/240v electrical control panels
- Red night lighting

DECK SALOON

- U-shaped sofa with coffee table
- Two-seater sofa
- Entertainment centre incorporating 48" LED TV with electric raise/lower mechanism and DVD, radio/MP3 system with surround sound system
- Units with refrigerator, bottle and glass storage
- L-shaped dining area with folding table
- Stainless steel framed sliding doors and electric powered aft window to cockpit

GALLEY

- 3-zone ceramic hob
- Combination microwave/conventional oven with grill
- Stainless steel sink with mixer tap
- Full height fridge/freezer (270l)
- Icemaker
- Storage cupboards, drawers and lockers

ACCOMMODATION

- All cabins and bathrooms feature opening portholes
- All cabins feature 220/240v power points
- All mattresses pocket sprung (excluding crew)
- All bathrooms feature full shower stalls, electric freshwater toilets, extractor fan and 240v shaver points

OWNER'S STATEROOM

- Large double bed with drawers below
- Twin wardrobes with shelves
- Shelves, storage lockers and drawers
- Dressing table
- Occasional table with fore and aft seating
- 40" LED TV, DVD, radio/MP3
- Overhead and individual berth lights
- En suite bathroom

FORWARD GUEST CABIN

- Large double bed with drawers below
- Wardrobe with shelves
- Dressing table
- Storage lockers and drawers
- Deck hatch
- Overhead and individual berth lights
- En suite bathroom with day access

STARBOARD GUEST CABIN

- Two single beds (with the option of sliding berths)
- Wardrobe with shelves
- Storage lockers and drawers
- Overhead and individual berth lights
- En suite bathroom

ENGINE OPTIONS - DIESEL

Twin Volvo D13-900 (2 x 900mhp)	Speed range: 30-32 knots†
Twin MAN V8 1200 (2 x 1200mhp)	Speed range: 34-36 knots†

OPTIONAL AFT CABIN

- Two single berths with storage below
- Wardrobe with shelf
- Overhead and individual berth lights
- Bathroom with toilet, washbasin and shower

INTERIOR FINISH

- Furniture in Rovere Oak with satin or high gloss finish. American Walnut or Alba Oak available as an option
- Avonite worktops and tiled floors in all guest bathrooms
- Avonite worktop and timber-laid floor in galley
- Choice of high quality carpet and upholstery fabric from extensive range
- Curtains, blinds or sunscreens to all windows and portholes
- Optional crew cabin fitted with non slip safety flooring

POWER AND DRIVE SYSTEMS

- 4-bladed propellers in nickel aluminium bronze
- Bow thruster (130kgf/287lbf)
- Power-assisted electro-hydraulic steering system with hydraulic back-up
- Electronic engine and gear shift controls
- Dripless shaft seals
- Engine room extractor fan with electronic time delay

ELECTRICAL SYSTEMS

24 Volt:

- 4 x heavy duty batteries for engine starting
- 4 x heavy duty auxiliary batteries
- 60 amp battery charger charges both banks of batteries via an automatic switch charging system
- Remote battery master switches with control switch at main panel
- LED lighting throughout

220/240 Volt:

- 9.5kw diesel generator in own sound shield with water cooled specially silenced exhaust
- 50 amp shore support inlet
- Earth leakage safety trip, polarity check system, circuit breakers on all circuits
- Power points in all areas

FUEL SYSTEM

- Twin fuel tanks (in NS8 marine grade alloy) with interconnection system giving 748 gal/898 US gal/3,400l capacity
- Fuel fillers on port and starboard side decks
- High capacity duplex fuel filters/water traps with audible and visual fuel contamination warning system
- Remote fuel cocks in cockpit locker
- Fuel gauges at lower helm console

WATER SYSTEM

- 174 gal/209 US gal/793l plus 16 gal/19 US gal/73l hot water calorifier, heated by engines and 240v immersion heater
- Water level gauge
- Deck filler
- Electric freshwater WC system with 60 gal/72 US gal/272l holding tank

FIRE EXTINGUISHERS

- Automatic/manual override fire extinguishers in engine room
- Hand-operated fire extinguishers in all cabins, galley and lower helm (5)

BILGE PUMPS

- Automatic electric bilge pumps (6)
- High capacity manual bilge pump with valve system and suction points in same areas

OTHER ITEMS SUPPLIED AS STANDARD

- Quilted bedspreads supplied to all cabins (except optional crew)
- Ensign staff
- Fenders (6) and warps (4)
- First aid kit
- Set of manuals

